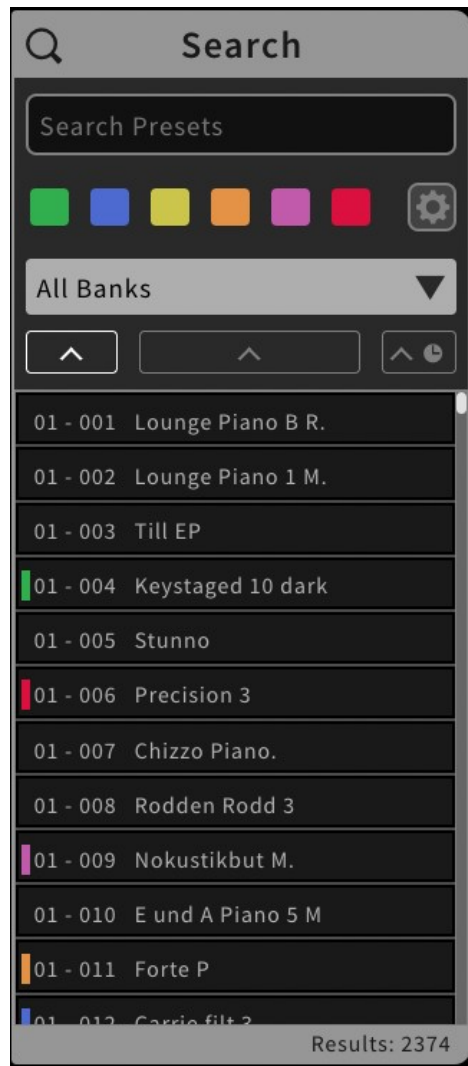
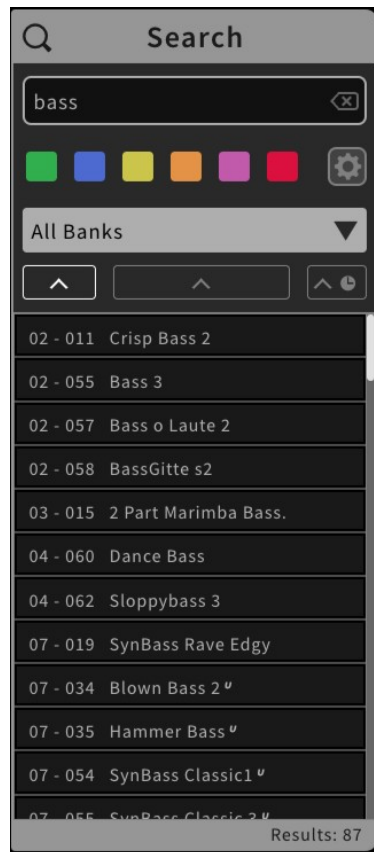


An Introduction to the New Preset Search of the C15

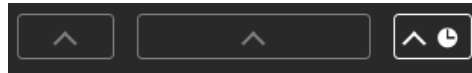


The Preset Search has been reworked from scratch and now combines all important functions and features in one place. It can be quickly accessed in the Graphic UI via the magnifier icon in the upper left corner. Click or tap the icon to open the window and do the same to close it. The search window is designed to always stick in its place and is not subject to the zoom level for the parameters and preset banks. So you can use the search while you are busy with parameter settings without leaving the current screen section.

In the new search window all search results are now displayed in a single list. This contributes enormously to a better overview of your own sound library. In addition, presets can of course be conveniently loaded directly from the list. The Direct Load function is also applied here.



You can use the search in several ways. Let's start with the most obvious variant and type one or more search terms into the search field. At the bottom right of the window you will now see the number of results. You can use the scroll bar or a touch gesture to scroll through the list of results. You will have noticed that the list is filled even without any search criteria. In this case all your sounds will be displayed in the list.



Especially with many search results it makes sense to sort the entries. For this purpose, three sort tabs are available directly above the list. Often it is interesting to get an overview of the last created sounds. Click on the tab with the clock icon on the far right and the oldest presets will be displayed first. If you click again, this sorting will be reversed. Do the same with the other two sorting options, which sort by (bank and preset) number and preset name.

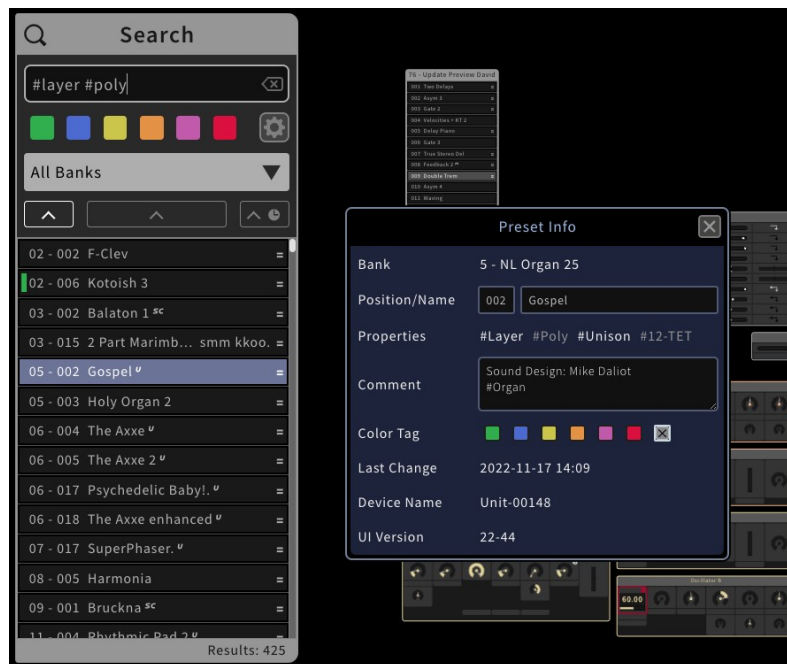


When searching for search terms, there are further settings that can influence the search. To do this, open the settings once by clicking or tapping on the gear icon. Via the "And/Or" buttons you can choose whether several search terms should be linked with AND or OR. By default, AND is set here. If you search for multiple terms, AND will only show presets that contain all terms, while OR will show all presets that contain at least one of the terms. Imagine that you want to search for organ-like sounds. Since the sounds of the C15 were created by sound designers from different countries, the organ sounds may also be named in different languages. So search for the English "Organ" and the German "Orgel" with an OR-operation and you will see that you will find more sounds than if you search for only one of the terms.

In the settings menu you can also decide in which areas you want to search. In addition to the name, you can also search in the preset comments and the device, i.e. the name of the C15 on which a preset was made. For example, you can display only your self-created presets if you search only for the name of your device. But also searching within comments is worthwhile, because more and more presets will have tags in the comment referring to their type and character. If the sounds of a particular sound designer convince you, you can also search for their name - usually this is also in the preset comment. Note that the "Name", "Comment" and "Device" selections are in an OR relationship with each other.



Now let's move on to the other search criteria available. Below the search field you will find the color tags. Click on them to refine the search. You will have noticed that you can select several color tags at the same time. These are in an OR relationship with each other. To deselect a color tag, simply click on it again. You can also use the color tags as the sole search criterion.

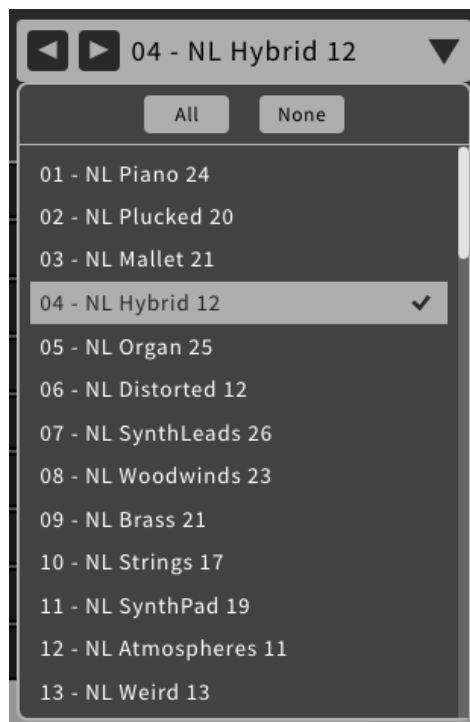


Similar to the color tags, the search can also be used with hashtags. The most suitable way to do this is to search for the automatically generated property hashtags that each preset contains. You can find the property hashtags in the info of each preset.

Try searching for #Layer and #Poly. Be careful not to forget the hashtag symbol, otherwise the search will only look for matches in the name or comment of a preset. In the results you will see all presets that have the sound type Layer and are polyphonic.

You can also combine the hashtag search with other, normal search terms. The AND or OR link from the settings also applies here. For example, you could search for all #Layer and #Split sounds with an OR link and in this way all dual sounds would be displayed. There are property hashtags for sound type (#Single, #Layer, #Split), voice type (#Mono, #Poly), Unison (#Unison, #1-voice) and Scale (#12-TET, #Scale).

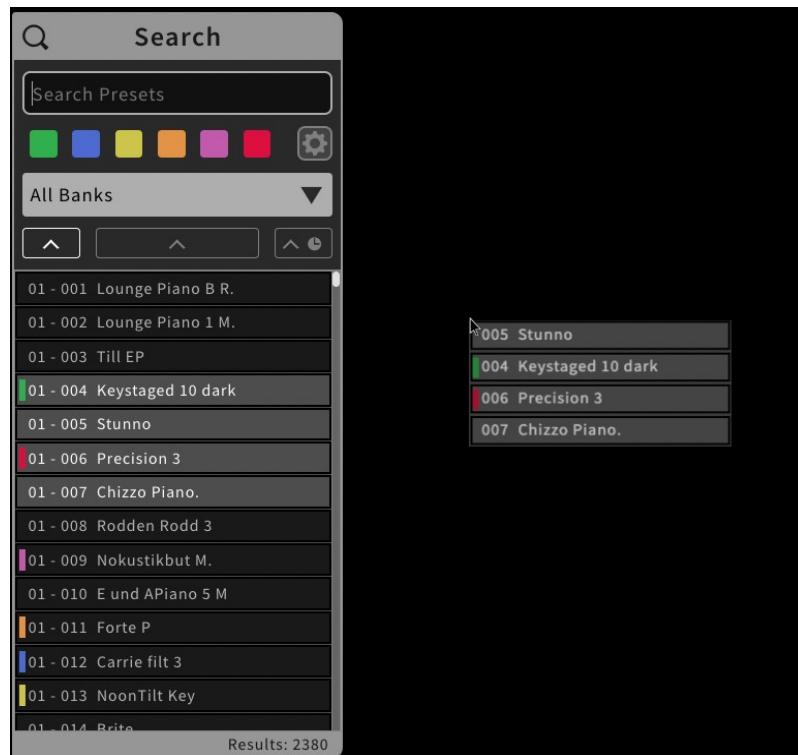
In addition, many of the C15's presets have hashtags associated with their sound characteristics (such as #Piano or #Lead). You can also search for these hashtags in this way. However, make sure that you also search in the comments, because the sound characteristic hashtags are in the comments field of the preset info and will not be found otherwise.



Finally, the search can also be restricted according to a bank selection. By default, all banks are searched, which is indicated by "All Banks" in the bank selection dropdown menu. In many cases, however, you may not want to search in all banks, but only in one or more. To do this, open the dropdown menu by clicking or tapping on it. Here you will find all your banks in one list. Click on a bank to select it. Whether a bank is selected or not is indicated by a check mark in the margin. If only one bank is selected, its name will be displayed in the dropdown menu.

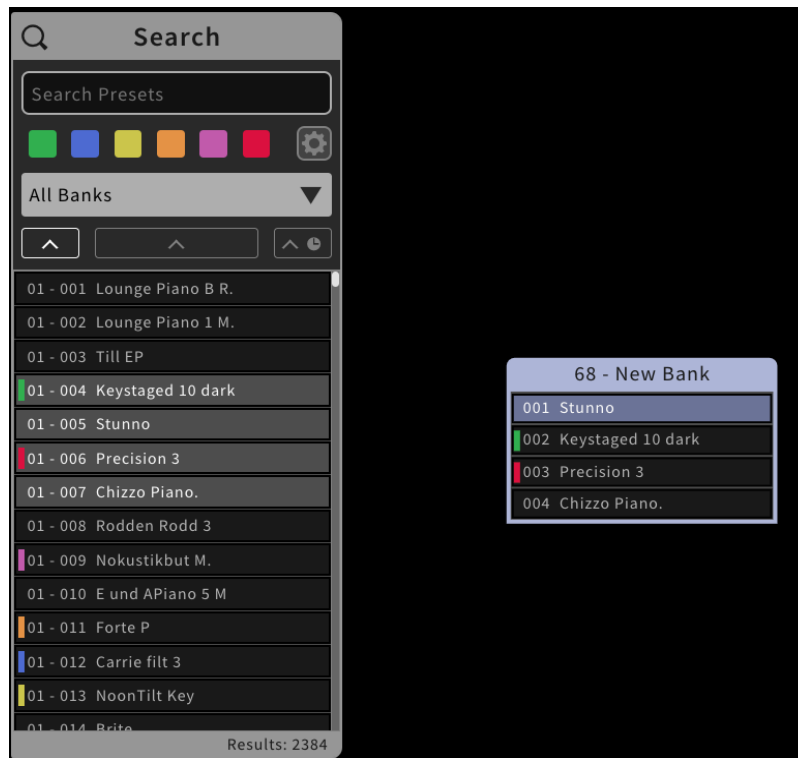
You will also have noticed that two left/right buttons have appeared next to the bank name. These allow you to conveniently step through the banks. This is especially useful if you do not use any search criteria other than the bank. This way you can quickly cycle through the banks and view their presets in the list. As soon as you have selected several banks, the buttons disappear again and the "Multiple Banks" text appears.

The "All" and "None" buttons in the open drop-down menu allow you to select or deselect all banks with a single click. None is especially useful if you want to deselect a selection and make a new selection. All is useful if you want to search in all but one or two banks. Note that whether you select All or None, you will search in all banks unless the selection is adjusted. This is also indicated by the "All Banks" label in the dropdown menu.



When a keyboard player prepares for his next gig with the C15, he often creates a special bank of sounds that will be played at this concert. Since the sounds are often distributed in many different banks, this can be quite a time-consuming job. We have therefore included a feature in the new preset search that can make organizing presets and banks much easier: Presets can be dragged + dropped directly from the search results list into a bank. You can even create new banks by simply dragging the presets onto the black background of the Graphic UI. In this case, a new bank is created at this point.

To select multiple presets in the list, simply hold down the Shift key on the computer keyboard and click to select the desired presets. If you are using a touch device, hold your finger on a preset for a short time and then release it to open the context menu. Select the first entry "Start Multiple Selection" and you can select multiple presets. Exit the selection mode in the same way. In the context menu you can also find the entry "Select All" to select all presets of the search result list at once.



Please note: If you use Drag & Drop on an Apple touch device, make sure that you move your finger away from the preset in a horizontal line, otherwise iOS will assume that you are making a scrolling gesture.

Text version: 4.2